



Acrobat 4 Distiller Settings



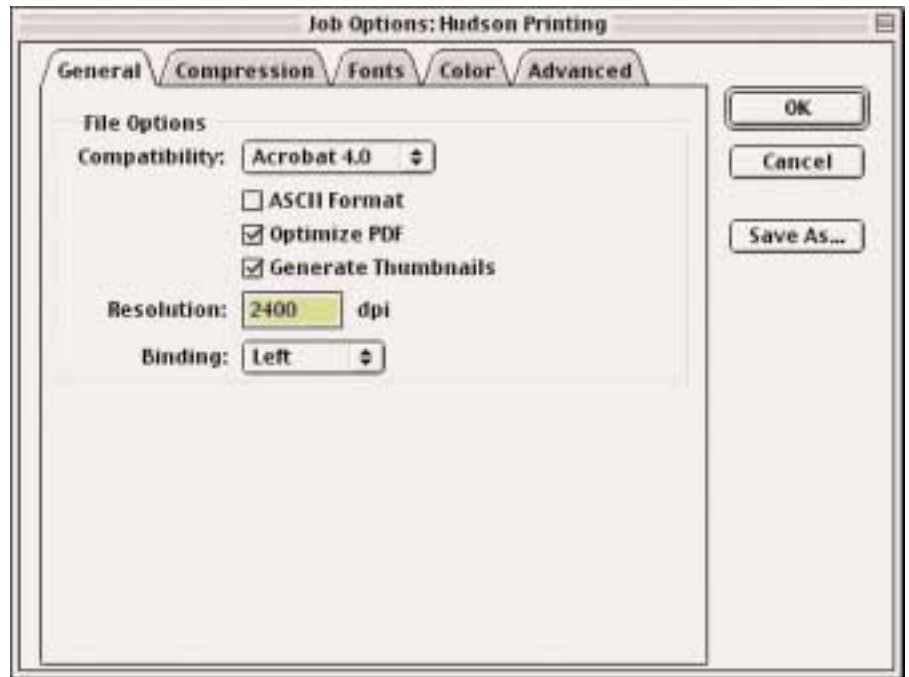
Launch Distiller and perform the following:

- Under Font Locations, be sure your jobs fonts folder is selected.
- Select Job Options under Settings as shown to the right.



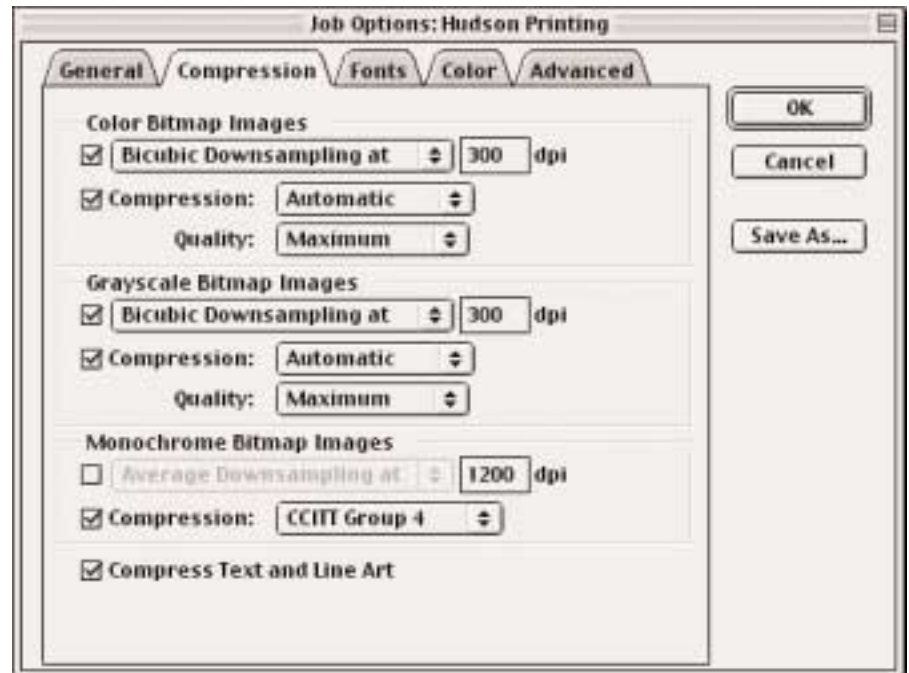
1) GENERAL

When the Job Options dialogue box opens up the “General” tab will appear first; select the options as shown to the right in Fig. 2. 2400 is our target output resolution for both CTP and film.



2) COMPRESSION

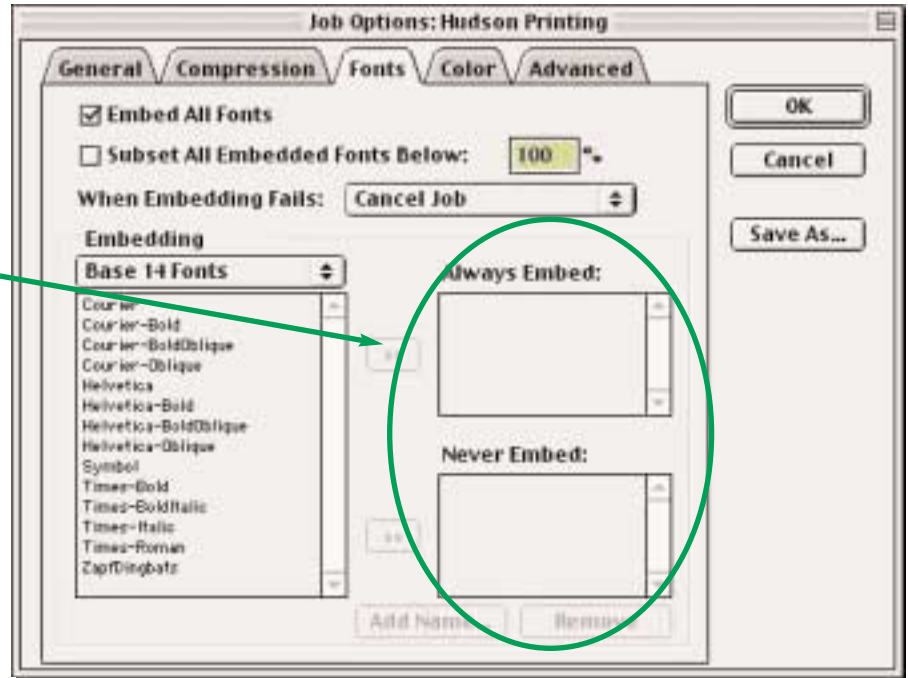
Select the Compression tab and match the settings shown to the right.



3) FONTS

Select the Fonts tab and match the settings shown to the right.

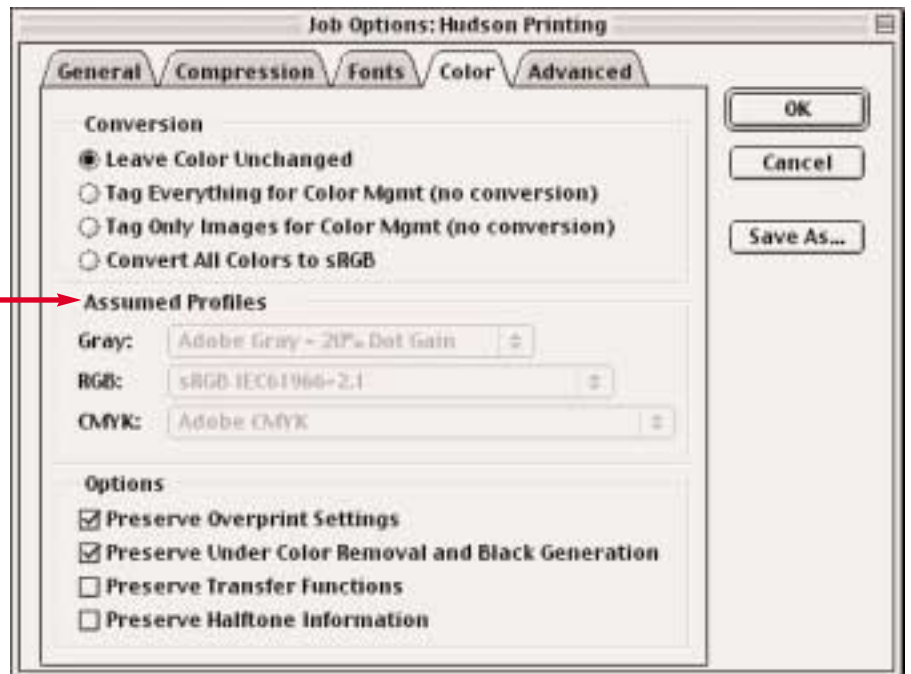
Be sure to clear fonts out of “Always Embed Font” and “Never Embed Font” lists.



4) COLOR

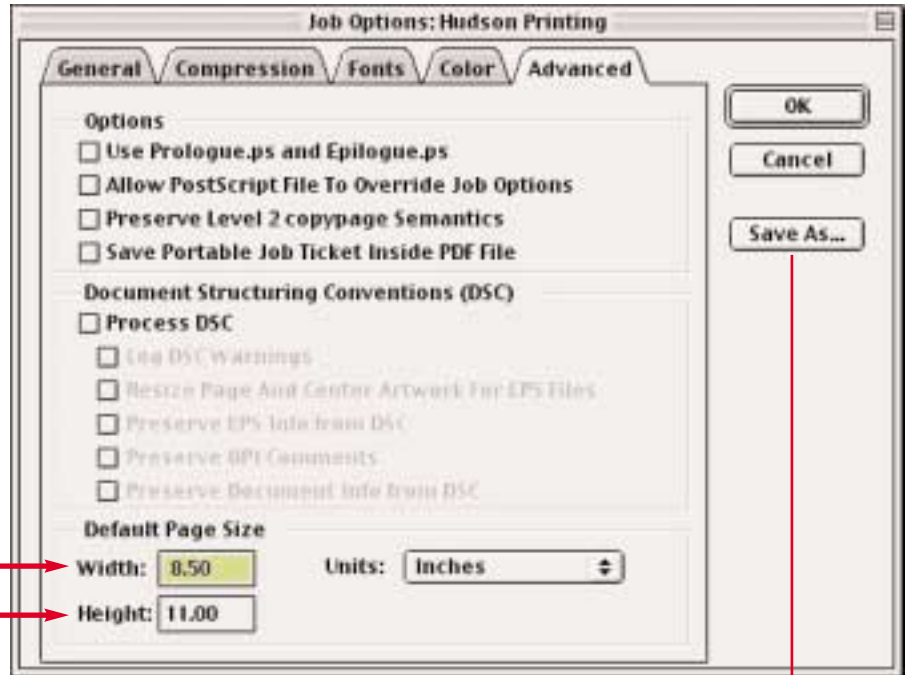
Select the Color tab and match the settings shown to the right.

The “Assumed Profiles” must be grayed out. We have developed our own custom built profiles that are calibrated for our presses, ensuring accurate color and quality from start to finish. If profiles are left on, you run the risk of a profile mismatch that could alter your jobs color output, resulting in lost production time.



5) ADVANCED

Select the Advanced tab and match the settings shown to the right.



Save these settings as your default sizes. They apply to incoming PS files that do not have a page bounding box (usually EPS files). Printed PS files from layout applications (Quark, Pagemaker, InDesign) will typically have bounding boxes.

Once done, save your profile for future use.

If you have any questions regarding these procedures, please contact your Hudson Printing representative, or the Electronic Prepress dept.

The preferences for these settings have been saved to our website.